

WHSAA Scale Sheet - Mallets

♩ = 132
B Flat



8 E Flat



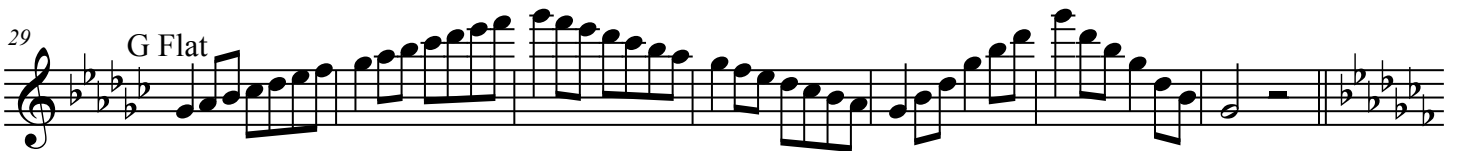
15 A Flat



22 D Flat



29 G Flat



36 C Flat



43 E



50 A



WHSAA Scale Sheet - Mallets

2

57 D



Musical staff for measure 57, D major scale. The staff is in treble clef with a key signature of two sharps (F# and C#). The melody consists of eighth notes: D4-E4-F#4-G4-A4-B4-C#5-D5, followed by a descending eighth-note scale: D5-C#5-B4-A4-G4-F#4-E4-D4. The measure ends with a whole note D4 and a repeat sign.

64 G



Musical staff for measure 64, G major scale. The staff is in treble clef with a key signature of one sharp (F#). The melody consists of eighth notes: G4-A4-B4-C#5-D5-E5-F#5-G5, followed by a descending eighth-note scale: G5-F#5-E5-D5-C#5-B4-A4-G4. The measure ends with a whole note G4 and a repeat sign.

71 C



Musical staff for measure 71, C major scale. The staff is in treble clef with a key signature of no sharps or flats. The melody consists of eighth notes: C4-D4-E4-F4-G4-A4-B4-C5, followed by a descending eighth-note scale: C5-B4-A4-G4-F4-E4-D4-C4. The measure ends with a whole note C4 and a repeat sign.

78 F



Musical staff for measure 78, F major scale. The staff is in treble clef with a key signature of one flat (Bb). The melody consists of eighth notes: F4-G4-A4-Bb4-C5-Bb4-A4-G4-F4, followed by a descending eighth-note scale: F4-E4-D4-C4-Bb3-Ab3-Gb3-Fb3-Eb3-Db3-Cb3. The measure ends with a whole note F4 and a repeat sign.

85 ♩ = 104



Musical staff for measure 85, chromatic scale. The staff is in treble clef. The tempo marking is ♩ = 104. The melody consists of eighth notes: C4-C#4-D4-D#4-E4-E#4-F4-F#4-G4-G#4-A4-A#4-B4-B#4-C5. The measure ends with a whole note C5 and a repeat sign.

86



Musical staff for measure 86, chromatic scale. The staff is in treble clef. The melody consists of eighth notes: C5-B4-Bb4-A4-Ab4-G4-Gb4-F4-Fb4-E4-Eb4-D4-Db4-C4-Cb4. The measure ends with a whole note C4 and a repeat sign.

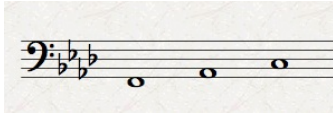
87



Musical staff for measure 87, chromatic scale. The staff is in treble clef. The melody consists of eighth notes: C4-B3-Bb3-A3-Ab3-G3-Gb3-F3-Fb3-E3-Eb3-D3-Db3-C3-Cb3. The measure ends with a whole note C3 and a repeat sign.

Timpani

© Eric Richards (2022)
erichards@sheridan.edu



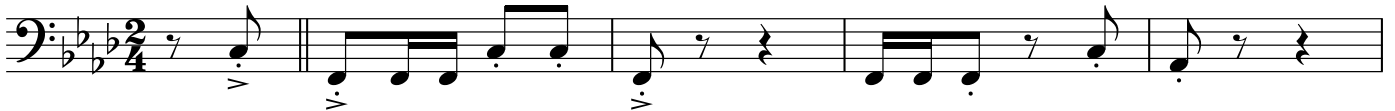
F2, Ab2, C3



WMEA All-State Band Etude I - SET 3 (2022)

Galop del Leccare! (♩ = 132)

Ab2 to Bb2



9 Bb2 to Ab2



17

Ab2 to G2

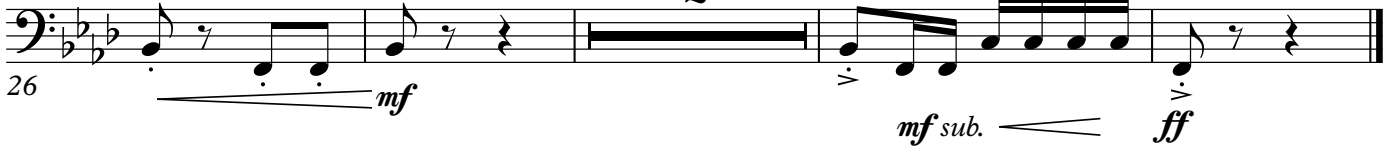


24

G2 to Bb2



2





WMEA All-State Band Etude I - SET 3 (2022)

Galop del Leccare! (♩ = 132)

f

6

9

12

17

20

24

p *cresc. poco a poco*

28

f *mf sub.* *ff*



WMEA All-State Band Etude I - SET 3 (2022)

Galop del Leccare! (♩ = 132)