

# WHSAA Scale Sheet - Trombone/ Euphonium

♩ = 132

B Flat

First musical staff for the B Flat scale, measures 1-7. The staff is in bass clef with a key signature of two flats (Bb and Eb) and a 4/4 time signature. It contains a series of eighth-note runs ascending and then descending.

8 E Flat

Second musical staff for the E Flat scale, measures 8-11. The staff is in bass clef with a key signature of three flats (Bb, Eb, and Ab). It contains a series of eighth-note runs ascending and then descending.

12 A Flat

Third musical staff for the A Flat scale, measures 12-18. The staff is in bass clef with a key signature of four flats (Bb, Eb, Ab, and Db). It contains a series of eighth-note runs ascending and then descending.

19 D Flat

Fourth musical staff for the D Flat scale, measures 19-22. The staff is in bass clef with a key signature of five flats (Bb, Eb, Ab, Db, and Fb). It contains a series of eighth-note runs ascending and then descending.

23 G Flat

Fifth musical staff for the G Flat scale, measures 23-29. The staff is in bass clef with a key signature of six flats (Bb, Eb, Ab, Db, Fb, and Gb). It contains a series of eighth-note runs ascending and then descending.

30 C Flat

Sixth musical staff for the C Flat scale, measures 30-33. The staff is in bass clef with a key signature of seven flats (Bb, Eb, Ab, Db, Fb, Gb, and Cb). It contains a series of eighth-note runs ascending and then descending.

34 E

Seventh musical staff for the E scale, measures 34-37. The staff is in bass clef with a key signature of two sharps (F# and C#). It contains a series of eighth-note runs ascending and then descending.

38 A

Eighth musical staff for the A scale, measures 38-44. The staff is in bass clef with a key signature of three sharps (F#, C#, and G#). It contains a series of eighth-note runs ascending and then descending.

45 D

Ninth musical staff for the D scale, measures 45-48. The staff is in bass clef with a key signature of two sharps (F# and C#). It contains a series of eighth-note runs ascending and then descending.

49 G

Tenth musical staff for the G scale, measures 49-55. The staff is in bass clef with a key signature of one sharp (F#). It contains a series of eighth-note runs ascending and then descending.

WHSAA Scale Sheet - Tbn/ Euph

2  
56

C



60

F

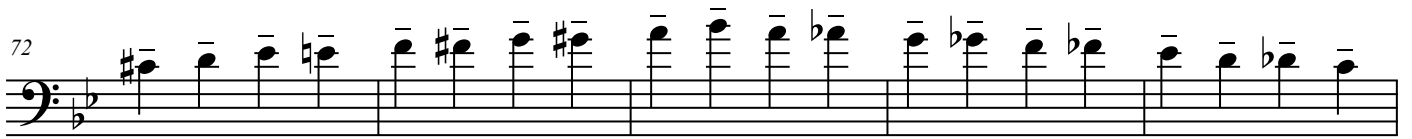


67

♩ = 72



72



77





# WMEA All-State Band Etude I - SET 3 (2022)

*Galop del Leccare!* (♩ = 132)

First musical staff, starting at measure 1. The key signature has three flats (B-flat, E-flat, A-flat) and the time signature is 2/4. The music begins with a dynamic marking of *f* (forte). The staff contains a series of eighth and sixteenth notes with slurs and accents.

Second musical staff, starting at measure 7. A box containing the number "9" is placed above the staff. The music continues with eighth and sixteenth notes, including a triplet. A dynamic marking of *f* is present below the staff.

Third musical staff, starting at measure 14. A box containing the number "17" is placed above the staff. The music features eighth and sixteenth notes with slurs. A dynamic marking of *f* is present below the staff.

Fourth musical staff, starting at measure 19. The music continues with eighth and sixteenth notes, including some rests. A dynamic marking of *f* is present below the staff.

Fifth musical staff, starting at measure 24. A box containing the number "24" is placed above the staff. The music begins with a dynamic marking of *p* (piano) and includes the instruction *cresc. poco a poco* (crescendo poco a poco). The staff contains eighth and sixteenth notes with slurs.

Sixth musical staff, starting at measure 28. The music continues with eighth and sixteenth notes. Dynamic markings include *f*, *mf sub.* (mezzo-forte subito), and *ff* (fortissimo). The staff concludes with a final note and a double bar line.



## WMEA All-State Band Etude II - SET 3 (2022)

*Cantabile* (♩ = 60)

*Molto espressivo*

*mf* *p* *f* *mf sub.*

4 *p* *f* *p*

6 *f* *mf* *f* *mf*

8 *pp* *f*

10 *mf* *p* *f*

12 *mf sub.* *p* *f* *p*

*rit.*