

WHSAA Scale Sheet - Trombone/ Euphonium

$\text{♩} = 132$

B Flat

Musical staff for B Flat scale, measures 1-7. The staff is in bass clef with a key signature of two flats (Bb and Eb) and a 4/4 time signature. The scale is written in eighth notes, starting on Bb and ending on Bb.

8 E Flat

Musical staff for E Flat scale, measures 8-11. The staff is in bass clef with a key signature of three flats (Bb, Eb, and Ab) and a 4/4 time signature. The scale is written in eighth notes, starting on Eb and ending on Eb.

12 A Flat

Musical staff for A Flat scale, measures 12-18. The staff is in bass clef with a key signature of four flats (Bb, Eb, Ab, and Db) and a 4/4 time signature. The scale is written in eighth notes, starting on Ab and ending on Ab.

19 D Flat

Musical staff for D Flat scale, measures 19-22. The staff is in bass clef with a key signature of five flats (Bb, Eb, Ab, Db, and Fb) and a 4/4 time signature. The scale is written in eighth notes, starting on Fb and ending on Fb.

23 G Flat

Musical staff for G Flat scale, measures 23-29. The staff is in bass clef with a key signature of six flats (Bb, Eb, Ab, Db, Fb, and Gb) and a 4/4 time signature. The scale is written in eighth notes, starting on Gb and ending on Gb.

30 C Flat

Musical staff for C Flat scale, measures 30-33. The staff is in bass clef with a key signature of seven flats (Bb, Eb, Ab, Db, Fb, Gb, and Cb) and a 4/4 time signature. The scale is written in eighth notes, starting on Cb and ending on Cb.

34 E

Musical staff for E scale, measures 34-37. The staff is in bass clef with a key signature of one sharp (F#) and a 4/4 time signature. The scale is written in eighth notes, starting on E and ending on E.

38 A

Musical staff for A scale, measures 38-44. The staff is in bass clef with a key signature of three sharps (F#, C#, and G#) and a 4/4 time signature. The scale is written in eighth notes, starting on A and ending on A.

45 D

Musical staff for D scale, measures 45-48. The staff is in bass clef with a key signature of two sharps (F# and C#) and a 4/4 time signature. The scale is written in eighth notes, starting on D and ending on D.

49 G

Musical staff for G scale, measures 49-55. The staff is in bass clef with a key signature of one sharp (F#) and a 4/4 time signature. The scale is written in eighth notes, starting on G and ending on G.

WHSAA Scale Sheet - Tbn/ Euph

2
56

C



60

F

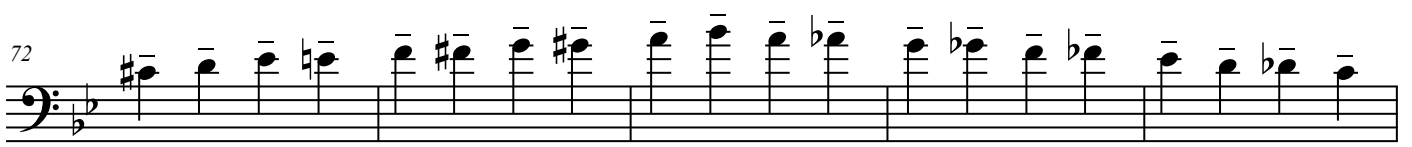


67

$\bullet = 72$



72



77





Wyoming All-State Band Etude I (2.0) - SET 1 (2020)

Con brio ♩ = 104-120

1

f

4

3 3

7

9 *p* *cresc. poco a poco*

10

(♩ = ♩)
f 3 *pp*

13

ff

16

p subito *f*



Wyoming All-State Band Etude II - SET 1 (2020)

Expressivo con moto ♩ = 68

1-4

p *mf*

5-8

3 *p* *mf* *pp* >

9-12

9 *f* 3 *p* 3 *f*

13-16

p 3 *f* 3

17-20

17 *mf* 3 *p* rit.